

# The Manchester Citizen



## YOUR OFFICIAL TOWNSHIP RESOURCE.

Make sure to refer to the 2017 Recycling and Bulk & Leaf Pick-up schedule on pages 12-13

### A NOTE FROM THE MAYOR....

Dear Manchester Township Residents,

This holiday season, may I wish each and every resident a joyous and healthy holiday and best wishes for the new year.

This *"Manchester Citizen"* newsletter is published once a year and it is produced at no cost to Manchester taxpayers. We thank the advertisers who make this publication possible and ask that our residents support these businesses and professionals whenever possible.

Included in the 2017 issue, you will find information about town council meetings, vital statistics and records, municipal services, recycling and bulk pick-up schedules, programs, activities, contact information for Manchester and Ocean County offices, and our "Shop Manchester" program.

I hope you find the enclosed information helpful. Please keep this newsletter handy as it contains information you may find useful throughout the year. The *Manchester Citizen* newsletter can also be accessed on the Township website at [www.manchestertwp.com](http://www.manchestertwp.com).

Best regards,

Kenneth T. Palmer

Mayor, Manchester Township



### Inside This Issue

Who's Who in Town Hall ...3

From the Office of the  
Township Clerk .....4

"No Knock Registry" .....4

Free WiFi at Town Hall ....4

Manchester Township  
Office of Emergency  
Management .....5

Fire Extinguishers .....6

Tax Collector  
ACH Application .....7

How to Prevent  
Frozen Pipes .....8

Division of  
Emergency Services .....9

Shop Manchester .....10

Special Events .....11

**DEPARTMENT OF  
PUBLIC WORKS ....12-13**

Tips Homeowners  
Should Follow / Zoning ...17

Thank You to  
the Businesses .....18



**Applebee's**  
GRILL + BAR

**PROUDLY SUPPORTS**  
Manchester Township!

**NEW**  
**WOOD FIRED**  
GRILL

**SAVE TIME. ORDER ONLINE.**  
Order anywhere from your computer, phone or tablet  
entirely in-app or in-person at our CarSide To Go!

**CARSIDE TO GO**  
SCAN OUR QR CODE  
or visit: applebees.com

**SUPPORTING OUR NEIGHBORHOOD**  
Please submit your requests for Donations, Fundraising Sponsorships,  
and Youth Connection by visiting "Community" at [www.dohertyinc.com](http://www.dohertyinc.com).

**DOHERTY**  
ENTERTAINMENT, INC.

**AUTHENTIC PORTUGUESE CUISINE**



*Just 20 minutes from Whiting*

**Every Tuesday**  
**Ladies**  
**1/2 Price**

**Thursdays**  
**Live Music &**  
**Two Lobsters for the**  
**price of one**

**609-971-7100 • 609-971-1776**

**44G Manchester Avenue • Forked River, NJ 08731**

*You Are Always Welcome Here!*

**Whiting**  
**United Methodist**  
**Church**

55 Lacey Road, Whiting, NJ 08759  
(732) 350-6878

**SUNDAY WORSHIP 8:30 and 10:30 AM**

**Sunday Worship 10 AM**  
**Wednesday 9 AM**

**Rev. Dr. J. Francis Watson**  
*Pastor*

**40 Schoolhouse Road**  
**Whiting, NJ 08759**

**(732) 350-0900**  
[www.christlutheranwhiting.com](http://www.christlutheranwhiting.com)

**Sandy's**  
**COZY CORNER**

**Credit Cards Accepted**  
**OPEN 7 DAYS**  
**Sun-Wed 6am - 3pm**  
**Thurs-Sat Open for Dinner 6am - 7:30pm**

*Experience the Difference! Come on in. There is no place like Sandy's!*

**Senior Specials \$11<sup>95</sup>**  
*Choose from 18 different choices*  
All complete with Soup or Salad, Entree, Dessert & Beverage

**Every Friday night**  
**Live Entertainment**  
**4-7pm**

**Great Family Restaurant**  
**with quaint Gift Shop**

*Come Meet Sandy & The Girls*  
**414 Route 70, Lakehurst, NJ**  
**732-657-7088**

**KIDS EAT FREE**  
*1 child per parent*  
**Sat. from 2-7pm**

**"Shop Manchester" Card**  
*Available here at Sandy's*

# MANCHESTER TOWNSHIP, NJ

1 Colonial Drive, Manchester, NJ 08759  
732-657-8121 • [www.manchestertwp.com](http://www.manchestertwp.com)

## WHO'S WHO IN TOWN HALL

*Mayor*, ext. 3105.....Kenneth T. Palmer  
*Council*, ext. 3200.....James Vaccaro, Councilman  
*Council*, ext. 3200.....Samuel Fusaro, Councilman  
*Council*, ext. 3200.....Brendan Weiner, Councilman  
*Council*, ext. 3200.....Craig Wallis, Councilman  
*Council*, ext. 3200.....Charles Frattini, Councilman  
*Business Administrator*, ext. 3107..... Donna Markulic  
*Director of Public Works*, ext. 3300.....Albert Yodakis  
*Director of Recreation*, ext. 5103.....Tracey Lynch  
*Director of Finance*, ext. 3600.....Diane Lapp  
*Township Clerk/Registrar*, ext. 3200.....Sabina T. Skibo  
*Tax Collector*, ext. 3700.....Andrea Gaskill  
*Tax Assessor*, ext. 3802.....Martin Lynch  
*Dir. Inspection, Land Use & Planning*, ext. 3900..Gary Sylvester  
*Construction Official*, ext. 3900.....Michael P. Martin  
*Chief of Police*, ext. 4100.....Lisa Parker  
*Emergency Management Coordinator*, ext. 4604...Arthur Abline  
*Dir. Senior and Social Services*, ext. 5002.....Brenda Sloan  
*Municipal Court Judge*, ext. 3407.....Daniel Sahin  
*Municipal Court Administrator*, ext. 3405.....Tracy Barcus  
*Div. of Personnel*, ext. 3010.....James Gant  
*Div. of Purchasing*, ext. 3500.....Maureen Kunitis

*Ocean County Board of Elections*.....732-929-2167

*Post Office – Manchester/Lakehurst*.....732-657-8562

*Post Office – Whiting*.....732-350-5817

*Post Office – Toms River*.....732-349-0710

*Ocean County Freeholders*.....732-929-2005

Washington Street, Administration Bldg.  
P.O. Box 2191, Toms River, NJ 08754-2191

*Freeholders*.....Gerry Little, John Bartlett, Jr.,  
John Kelly, Virginia Haines and Joseph Vicari

### OTHER AGENCIES

*Manchester Board of Education*  
732-350-5900

*Manchester High School*  
732-657-2121

*Manchester Middle School*  
732-657-1717

*Manchester Elementary*  
732-323-9600

*Whiting Elementary*  
732-350-4994

*Ridgeway Elementary*  
732-323-0800

*Regional Day School*  
732-928-1500

*Manchester Branch - Ocean County Library*  
732-657-7600

*Whiting Reading Center*  
732-849-0391

*Ocean County Library - Main Branch*  
(Toms River) 732-349-6200

*N. J. State 10th District Legislative Office*  
732-840-9028

852 Highway 70, Brick, NJ 08724  
Sen. James Holzapfel  
Assemblymen David Wolfe and  
Gregory McGuckin

**FEDERAL REPRESENTATIVES:**  
*Congressman Christopher Smith*  
732-350-2300

405 Route 539 (Pinehurst Road)  
Plumsted, NJ 08533

*U. S. Senator, Robert Menendez*  
973-645-3030

1 Gateway Center, 11th floor, Newark, NJ 07102

*U. S. Senator, Cory A. Booker*  
856-338-8922

1 Port Center, 2 Riverside Dr., Suite 505  
Camden, NJ 08101

### Dates for the 2017 elections are as follows:

Tuesday, November 7, 2017

General Election 6 a.m. – 8 p.m.

Tuesday, June 6, 2017

Primary Election 6 a.m. – 8 p.m.

Please visit our website: [www.manchestertwp.com](http://www.manchestertwp.com) - Clerk's office for more election information.





# FROM THE OFFICE OF THE TOWNSHIP CLERK

## Sabina T. Skibo, R.M.C.

### Vital Statistics

When applying for a marriage or civil union license, please be sure to call the Registrar well in advance of the ceremony to **schedule an appointment** to apply for the license. We are located in the Township Clerk's office and can be reached at 732-657-8121, ext. 3200. State law requires a 72 hour waiting period before the license can be issued. Information can be obtained on our website or by calling our office.

### Copies of Vital Records - (Death Certificate, Birth Certificate, Marriage/Civil Union Certificate, Domestic Partnership)

*Certified copies are \$10.00 each. Corrections to vital records are \$15.00 each.* To get a certified **copy** of a person's vital record, you must provide proof of your relationship to the person listed on the record **and** the proof must establish you are one of the following:

- The subject of the record
- The subject's parent, legal guardian or legal representative
- The subject's spouse/civil union partner; child, grandchild or sibling, if of legal age
- A state or federal agency for official purposes
- Pursuant to court order

Please visit our website: [www.manchestertwp.com](http://www.manchestertwp.com) – Department – Township Clerk for more information concerning all services provided by the Township Clerk's office (dog licensing, legalized games of chance, OPRA, elections, etc.).

### Manchester Township “No Knock Registry”

Residents who no longer wish to receive door-to-door visits from vendors are invited to sign up for Manchester Township's newly created “No Knock Registry.” The registry permits all residents to register with the Township Clerk indicating that they do not want hawkers, peddlers, solicitors or canvassers to approach their homes and/or seek contact with the occupants of the registered home. Registration can be completed through a form made available in the Township Clerk's office or on our website.

Once registered, the Clerk's Office will provide a self-adhering sticker, free of charge if picked up at the Clerk's Office during normal business hours. Residents may elect to apply by mail and have their sticker delivered for a \$1.00 processing and mailing fee (checks can be made payable to “Manchester Township.”)

The Clerk's Office will maintain the “No Knock Registry.” Vendors must inspect the list and cannot approach any residence on the list, or face a fine of up to \$1,000, 90 days in prison, or 90 days community service. The registry will be provided to any licensee who is issued a license to conduct door to door sales pursuant to Manchester Township Code #301-21. It should be noted that registration upon the “No Knock Registry” does not prohibit door to door solicitation by non-profit, charitable, religious or political organizations, as these types of solicitations are protected by the First Amendment.

An application for the “No Knock Registry” is available on our website on the home page.

### Free Wifi Available at Town Hall

Manchester Township is proud to announce that it now has free WiFi available at its entire campus at 1 Colonial Drive. This past spring, the Division of Data Processing teamed with TTI wireless to install an Extreme Wireless Solution capable of delivering fast WiFi internet to hundreds of users simultaneously. A robust back end was installed along with 25 wireless access points which allow seamless roaming around the entire campus. Guests are invited to use the network while here for different community events.

To Join:

- Click on your phone's wifi settings.
- Join the “Manchester Guest” Network.
- You will be prompted to click a button to agree to terms of service, allowing Internet use.
- Enjoy!



# MANCHESTER TOWNSHIP OFFICE OF EMERGENCY MANAGEMENT

## WHY TALK ABOUT WINTER WEATHER?

- Each year, dozens of Americans die due to exposure to cold. Add to that number, vehicle accidents and fatalities, fires due to dangerous use of heaters and other winter weather fatalities and you have a significant threat.
- Threats, such as hypothermia and frostbite, can lead to loss of fingers and toes or cause permanent kidney, pancreas and liver injury and even death. You must prepare properly to avoid these extreme dangers. You also need to know what to do if you see symptoms of these threats.
- A major winter storm can last for several days and be accompanied by high winds, freezing rain or sleet, heavy snowfall and cold temperatures.
- People can become trapped at home or in a car, without utilities or other assistance.
- Attempting to walk for help in a winter storm can be a deadly decision.
- The aftermath of a winter storm can have an impact on a community or region for days, weeks or even months.
- Extremely cold temperatures, heavy snow and coastal flooding can cause hazardous conditions and hidden problems.



### HEAVY SNOW



Heavy snow can immobilize a region and paralyze a city, stranding commuters, closing airports, stopping the flow of supplies, and disrupting emergency and medical services. Accumulations of snow can cause roofs to collapse and knock down trees and power lines.

Homes and farms may be isolated for days and unprotected livestock may be lost. In the mountains, heavy snow can lead to avalanches. The cost of snow removal, repairing damages, and the loss of business can have severe economic impacts on cities and towns.

**BLIZZARD:** Winds of 35 mph or more with snow and blowing snow reducing visibility to less than ¼ mile for at least 3 hours.

**BLOWING SNOW:** Wind-driven snow that reduces visibility. Blowing snow may be falling snow and/or snow on the ground picked up by the wind.

**SNOW SQUALLS:** Brief, intense snow showers accompanied by strong, gusty winds. Accumulation may be significant.

**SNOW SHOWERS:** Snow falling at varying intensities for brief periods of time. Some accumulation is possible.

**SNOW FLURRIES:** Light snow falling for short durations with little accumulation.

### ICE

- Heavy accumulations of ice can bring down trees and topple utility poles and communication towers.

- Ice can disrupt communications and power for days while utility companies repair extensive damage.

- Even small accumulations of ice can be extremely dangerous to motorists and pedestrians.

- Bridges and overpasses are particularly dangerous because they freeze before other surfaces.



## POWER OUTAGES

Should your power go out ***please DO NOT call the police*** as they will be busy enough with emergency calls. You should call your electric company. For most residents in Manchester Township that is JCP&L (Jersey Central Power & Light) **1-888-544-4877**. When you are on the phone with JCP&L please remember to write down the reference number they provide you with. This is important in case you have to call back. If you do not have the reference number, which is the easiest way for them to look up your information, you might have to go through the process again.

In anticipation of an emergency situation, anyone with special needs is encouraged to register with the Township Office of Emergency Management. Forms can be obtained at Police Headquarters.

Any organization wishing for the Manchester Township Office of Emergency Management to make a presentation on disaster preparedness, please feel free to contact Arthur Abline at (732) 657-2009 ext. 4604 or via e-mail @ [aabline@manchestertwp.com](mailto:aabline@manchestertwp.com).

In closing, it is important for all people involved in a disaster situation to heed the warning and advice from your emergency management officials, as well as the emergency responders of your municipality, as these are the people trained in disaster situations. Always have a battery operated radio with extra batteries on hand to listen to the local radio stations so you are aware of what is occurring and can follow the directions for evacuation routes and where shelters are located.

# Fire Extinguishers

When used properly, a portable fire extinguisher can save lives and property. Portable fire extinguishers, intended for your home or business, are not designed to fight large or spreading fires. With so many fire extinguishers to choose from, selecting the proper one for your home or business can be a daunting task. The Manchester Township Fire Prevention Bureau recommends everyone should have at least one fire extinguisher at home and in every business, but it's just as important to ensure you have the proper type of fire extinguisher. Fire extinguishers are divided into five categories, based on their uses. Extinguishers can even have multi-uses. The classes of fire extinguishers are:

**Class A** extinguishers are for ordinary combustible materials such as paper, wood, cardboard, and most plastics. The numerical rating on these types of extinguishers indicates the amount of water it holds and the amount of fire it can extinguish. Geometric symbol (green triangle)

**Class B** fires involve flammable or combustible liquids such as gasoline, kerosene, grease and oil. The numerical rating for class B extinguishers indicates the approximate number of square feet of fire it can extinguish. Geometric symbol (red square)



**Class C** fires involve electrical equipment, such as appliances, wiring, circuit breakers and outlets. Never use water to extinguish class C fires – the risk of electrical shock is far too great! Class C extinguishers do not have a numerical rating. The C classification means the extinguishing agent is non-conductive. Geometric symbol (blue circle)

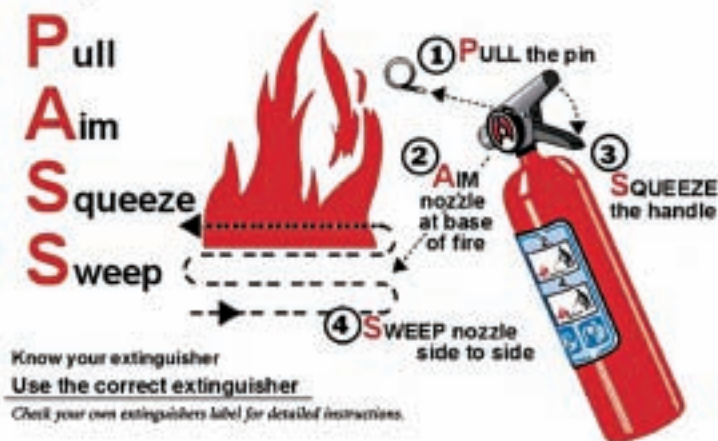
**Class D** fire extinguishers are commonly found in a chemical laboratory. They are for fires that involve combustible metals, such as magnesium, titanium, potassium and sodium. These types of extinguishers also have no numerical rating, nor are they given a multi-purpose rating – they are designed for class D fires only. Geometric symbol (Yellow Decagon)

**Class K** fire extinguishers are for fires that involve cooking oils, trans-fats, or fats in cooking appliances and are typically found in restaurant and cafeteria kitchens. Geometric symbol (black hexagon)

## Remember these tips:

- Extinguishers should be installed in plain view above the reach of children near an escape route and away from stoves and heating appliances.
- Extinguishers require routine care. Read your operator's manual and ask your dealer how your extinguisher should be inspected and serviced. Rechargeable models must be serviced after every use. Disposable fire extinguishers can be used only once; they must be replaced after one use. Following manufacturer's instructions, check the pressure in your extinguishers once a month.
- Stand 6 to 8 feet away from the fire and follow the four-step PASS procedure:
- Before you begin to fight a fire:
  - Make sure everyone has left, or is leaving, the building.
  - Make sure the fire department has been notified by dialing 911.
  - Make sure the fire is confined to a small area and that it is not spreading beyond the immediate area.
  - Make sure you have an unobstructed escape route to which the fire will not spread.
  - Make sure that you have read the instructions and that you know how to use the extinguisher.

## To operate an extinguisher:



- **PULL** the pin out: This unlocks the operating lever and allows you to discharge the extinguisher. Some extinguishers have other devices that prevent inadvertent operation.
- **AIM** low: Point the extinguisher nozzle (or hose) at the base of the fire.
- **SQUEEZE** the lever below the handle: This discharges the extinguishing agent. Releasing the lever will stop the discharge. Some extinguishers have a button that you press.
- **SWEEP** from side to side: Moving carefully toward the fire, keep the extinguisher aimed at the base of the fire and sweep back and forth until the flames appear to be out. Watch the fire area. If the fire re-ignites, repeat the process.

**It is dangerous to fight a fire under any other circumstances. Instead, leave immediately and close off the doors and windows if possible.**



# Manchester Township Department of Finance - Division of Revenue Collection

1 Colonial Drive • Manchester, NJ 08759 • 732-657-8121 ext. 3700

**Return By:**  
January 1st  
April 1st  
July 1st  
October 1st

**For Payment On:**  
February 4th  
May 4th  
August 4th  
November 4th

## ACCOUNT DEBIT AUTHORIZATION FOR AUTOMATIC QUARTERLY TAX AND WATER AND/OR SEWER PAYMENTS

Name: \_\_\_\_\_

Mailing (Street) Address: \_\_\_\_\_

City: \_\_\_\_\_

State: \_\_\_\_\_

Zip Code: \_\_\_\_\_

## BANKING ACCOUNT INFORMATION

Routing (ABA) Number: \_\_\_\_\_

Bank Account Number: \_\_\_\_\_

Bank Account Type: ☐ Checking ☐ Savings

Bank Name: \_\_\_\_\_

**\*\*For account verification purposes, kindly attach a voided check or voided savings account deposit slip with this application\*\***

## DIRECT DEBIT AUTHORIZATION

I hereby authorize Manchester Township to debit my checking or savings account each quarter (February, May, August, and November) for the municipal charges I have indicated below. I understand that these charges will continue being deducted automatically from my checking or savings account until I make written request for Manchester Township to discontinue direct debit of my account.

☐ Municipal Taxes ☐ Water Charges ☐ Water/Sewer Charges

Signature: \_\_\_\_\_

Date: \_\_\_\_\_

Print Name: \_\_\_\_\_

All insufficient funds will incur a \$20.00 processing fee. Complete this form and mail to the above address. Your account will be pre-noted to verify account accuracy prior to the first actual debit to your account for municipal charges. We do not recommend use of money market accounts for this service. If a weekend or holiday occurs on the debit date, we will debit your account on the next banking day.



**Century 21**  
ACTION PLUS REALTY  
800.299.2129

**NOW IS THE TIME TO JOIN OUR AWARD WINNING TEAM!**  
**ASK FELICIA HOW SHE BECAME A SUCCESS IN REAL ESTATE.**  
**CALL 800.299.2129 TO SCHEDULE AN INTERVIEW.**



**FELICIA FINN, BROKER-ASSOCIATE**  
EXECUTIVE BRANCH LEADER - TOMS RIVER OFFICE  
MANCHESTER RESIDENT SINCE 1988  
CENTURY 21 CENTURION OF PRESIDENT'S PRODUCER 2015  
QUALITY SERVICE PINNACLE PRODUCER 2015  
NJAR® CIRCLE OF EXCELLENCE AWARD WINNER - GOLD 2015

**#1 CENTURY 21 Company in Monmouth & Ocean Counties**  
**#1 CENTURY 21 Company in NJ/Delaware Region**

**6 Office Locations in Toms River, Forked River, Jackson, Howell, Freehold & Millstone**

\*According to NAR's State 2013. \*\*According to CENTURY 21, LLC State 2013. Each office is independently Owned & Operated.



**Century 21**  
Action Plus Realty  
800-299-2129  
ActionPlusRealty.com

**NOW OPEN: TOMS RIVER OFFICE**  
**1200 RTE. 37**

# How to Prevent Frozen Pipes

Turn Off the Water, Turn Up the Heat

When liquids freeze, they expand. When water freezes in a pipe, it can cause extensive damage. There's nothing worse than coming home to major water damage due to a few frozen pipes.

**250,000 HOMES**  
damaged by frozen pipes each year.

There are three main reasons pipes freeze:

- 1** Drastic changes in temperature
- 2** Poorly insulated pipes
- 3** Thermostat set too low

*Everything from plastic to copper can freeze—and then burst.*

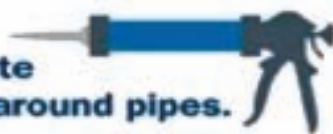
## Pipes most at-risk of freezing:

- Close to exterior walls
- Near swimming pools and water sprinkler supply pipes
- In unheated places like crawl spaces, attics and garages

**UP TO 250 GALLONS**  
of water can discharge through a 1/8" crack in one day.

Use these easy tricks to help you avoid frozen pipes:

- ✓ Insulate pipes located in a crawl space or attic.
- ✓ Use pipe sleeves, heat tape or heat cables on exposed water pipes.
- ✓ Caulk or insulate cracked seals around pipes.
- ✓ Open cabinet doors leading to exposed pipes or pipes close to exterior walls to allow warm air to circulate.



- ✓ Use an indoor shut-off valve to drain water from pipes leading to outside faucets.



- ✓ If it's extremely cold, keep your thermostat at the same temperature day and night.

**< 20 DEGREES FAHRENHEIT**  
Turn off outside water or insulate at-risk pipes as a precaution.





## Division of Emergency Services within the Department of Public Safety

Keeping Manchester Township's residents and visitors safe is a top priority, and that mission would not be possible without the exemplary work of our Division of Emergency Services, which is within the Department of Public Safety. Comprised mostly of volunteers, these dedicated individuals enhance the safety and quality of life for the residents of Manchester Township as well as the surrounding areas by providing emergency response, emergency medical services, public safety education, and fire prevention and response.

The Division of Emergency Services is comprised of three Fire Companies and two First Aid Squads: Manchester Township Volunteer Fire Company – Station 32, Whiting Volunteer Fire Company – Station 33, Ridgeway Volunteer Fire Company – Station 34, Manchester First Aid – Squad 29, and Whiting First Aid – Squad 43. Becoming a member of one of these organizations is a selfless and honorable endeavor, as volunteers give countless hours of their time serving their community.

For example, Whiting Volunteer First Aid has five members serving 20 years or more, a point of great pride for Captain Joan Tarr. "We can't promise any rewards, but we do tell them that they will feel good about reaching out to help someone who needs medical assistance," Captain Tarr said.

The role of an emergency responder goes beyond providing help when a call for service is received, according to Captain Joseph Klimakowski of Manchester First Aid. "Not only do we ride 6 to 12 hours a week or more, the members also volunteer extra time to cover community events such as Manchester Middle School and High School Graduations, Pop Warner and Manchester Township High School Football Games, Manchester Day and concerts at Harry Wright Lake, and the Walk-A-Thon for Cancer," he said.

Keeping updated on the latest training is critical for these organizations. Firefighters from both Manchester and Whiting — their companies are led by Chief Joseph Howell and Chief Rodney Sloan, respectively — recently practiced extrication basic training, using their tools to maneuver and dismantle real vehicles in a rescue simulation. Firefighters from Ridgeway, led by Chief Michael Trimarchi, participated in a water shuttle task force drill, which is a necessary process should they need to establish a water supply in areas with little to no hydrant capabilities.

Residents should rest assured that these rescue and safety measures are practiced regularly, during the volunteers' free time, to ensure responders can act quickly, effectively, and safely during an emergency situation. Anyone who becomes a member of a Manchester Township volunteer emergency service organization is provided, free of charge, with the training and equipment necessary to successfully perform their duties. The Ridgeway Volunteer Fire Company proudly proclaims a sentiment echoed by all volunteer organizations: it's about "neighbor helping neighbor."

Maintaining adequate staffing levels is a challenge that all volunteer organizations face, as membership is dependent upon the generous and selfless commitment of our local citizens. Members find ways to make time for their volunteer duties between their day jobs and family commitments. Manchester Township's volunteer emergency services organizations are always in search of dedicated, hardworking and committed individuals to join their ranks.

"I encourage any resident who wants to serve their community to submit an application to one of our volunteer emergency service organizations," said Emergency Management Coordinator Arthur Abline. "Our volunteer emergency service personnel are some of the most dedicated individuals you'll ever meet. They staff all-volunteer organizations, meaning their selfless commitment to others is what keeps our residents safe."

If you would like to become a member of one of these volunteer organizations, more information and detailed application instructions are available through the "Emergency Services" tab on the Police Department website, [www.ManchesterPoliceNJ.com](http://www.ManchesterPoliceNJ.com). Applicants must possess a valid New Jersey driver license, be a New Jersey resident, submit to a Criminal History Background Check, have good moral character, and have the ability to perform the tasks, duties, and essential job functions of the respective emergency services organization for which you are applying.



# 'Shop Manchester' Program Ready to Bring Tax Savings to Residents

Manchester Township officials are proud to announce that residents may now sign up for the "Shop Manchester" property tax rewards program, which officially kicked off on October 1, 2016. Under this program, residents who present their free "Shop Manchester" card at participating local merchants will receive a rebate that will be applied to their third quarter tax bill, no strings attached.

Using "Shop Manchester" is simple: residents register free of charge for the program and receive a "Shop Manchester" card. Each time that card is presented during check-out at participating local retailers, a pre-determined percentage of that purchase is applied as a rebate to the shoppers' property tax bill. Renters may also participate in the program, receiving a cash rebate rather than property tax rebate.

"Shop Manchester" is an exciting program since it puts money back in our residents' wallets while encouraging them to support our local business community. This program, which is operated at no cost to the taxpayer, has found great success in other nearby towns, and we're confident it will benefit Manchester Township as well," said Maureen

Kumitis, director of the Township's Purchasing Division. Prior to its implementation, the "Shop Manchester" program and our partner, FinCredit, were thoroughly researched by officials, earning the full support of Mayor Kenneth Palmer and the Township Council.

So far, 17 merchants are enrolled in the program, including businesses in Lakehurst Borough, thanks to a partnership with our neighboring officials. A full list of those participating merchants is printed below and is also available on the Manchester Township website, [www.ManchesterTwp.com](http://www.ManchesterTwp.com), by clicking the "Shop Manchester" tab. The list is often updated.

Residents are invited to pick up their "Shop Manchester" card by visiting a participating merchant, or by contacting the Purchasing Division at 732-657-8121, ext. 3500. Township representatives have been speaking about the program and assisting residents with registration at senior villages throughout Manchester Township.

**Merchants who are interested in participating in the program** may call FinCredit at 732-946-0919 or for more information.

## SHOP MANCHESTER MERCHANTS LIST

<b>Sandy's Cozy Corner</b> 414 Rte. 70, Lakehurst, NJ 08733 732-657-7088 <b>7.5% from 3:00PM – 5:00PM</b> Thurs-Fri-Sat Only <i>"Experience the Difference"</i>	<b>DeGraff Lakehurst Funeral Home</b> 119 Union Avenue, Lakehurst, NJ 08733 732-657-7868 <b>3% Caskets &amp; 5% Urns</b> <i>"Where Knowledge and Courtesy go along with years of compassion and understanding"</i>	<b>Martucci's Flashback Diner</b> 400 Lacey Road, Suite 9A Manchester, NJ 08759 732-716-1122 <b>7.5%</b> (Cannot be combined with any other offer) <i>"Best Burgers in Town"</i>
<b>American Automotive</b> 200 Rt. 37 Lakehurst, NJ 08733 848-227-5883 <b>5% on total over \$100.00</b> <i>"Local Service Station"</i>	<b>Law Office of Kenneth T. Palmer</b> 550 Rt. 70 Lakehurst, NJ 08733 732-657-3225 <b>5% on Real Estate Fees</b>	<b>Varriale's Pizza</b> 400 Lacey Road, Suite 6 Whiting, NJ 08759 732-849-1400 <b>7.5% – Cannot be combined with other offers.</b> <i>"We Deliver, Eat in or Take Out"</i>
<b>Cooper's Florist &amp; Gifts</b> 670 Rte. 70 Lakehurst, NJ 08733 732-657-6000 <b>7.5% on Total</b> <i>"Say it with Flowers"</i>	<b>Whiting Dental</b> 200 Lacey Road, Whiting, NJ 08759 732-350-9494 <b>7.5%</b> <i>"General Dentistry for the whole family from seniors to children dentistry"</i>	<b>Hall's Gulf Service, Inc</b> 671 Rt 70, Lakehurst, NJ 08733 Lakehurst Circle Center 732-657-0921 <b>7.5% Labor – Cannot be combined with other offers.</b> <i>"Turn to us for all of your Auto Repairs &amp; Vehicle Maintenance Needs"</i>
<b>Sal's Choice Cars, Manchester Custom Collision</b> 1745 Rte. 37 West, Toms River, NJ 08757 732-736-1110 <b>7.5% of total costs</b> <i>"We hope our choice, will be your choice"</i>	<b>Travel Plaza</b> 2112 Rte. 70 Hudson City Plaza Manchester, NJ 08759 • 732-657-7700 <b>2% - 4% Cruises &amp; Tours over \$4,000.00.</b> Call for your best offer. Cannot be combined with other offers. <i>"First Class Travel at Discount Prices"</i>	<b>Whiting Pharmacy</b> 200 Lacey Road Suite 2 Whiting, NJ 08759 732-849-3141 <b>7.5% of Sale</b> <i>"Free pick-up and delivery"</i>
<b>Trish's Hair Salon</b> 75 Lacey Road, Suite 5 Whiting, NJ 08759 848-227-3091 <b>1.5%</b>	<b>** Oliverie Funeral Home, Inc.</b> 2925 Ridgeway Rd., Manchester, NJ 08759 732-657-4900 <b>7.5% Valid for at-need arrangements only.</b> All Merchandise must be purchased through the funeral home. <i>"When you need family the most, Call the family you can trust."</i> <b>** CARD SPONSOR</b>	<b>Mad Dog Franks Hot Dogs &amp; Subs, LLC</b> 11 Union Avenue Lakehurst, NJ 08733 732-657-0100 <b>7.5%</b> <i>"Not just another Hot Dog"</i>
<b>Village Opticians, Dr. Wolfe</b> 550 Route 530, Ste. 19, Whiting, NJ 08759 732-350-9191 <b>7.5%</b> <i>"We provide our customers with personalized professional service while giving competitive pricing using the highest quality lenses and frames available"</i>	<b>VMS Virtual Management Services</b> 103 Lacey Road Whiting, NJ 08759 732-281-1350 <b>15%</b> <i>"Behave Cameras are Everywhere"</i>	

Check our website for updates.



# The Manchester Township Recreation Department

The Manchester Township Recreation Department sponsors special events throughout the year. Please be sure to check our website for the latest information on seasonal events, such as:

- **Spring:** Easter Egg Hunt
- **Summer:** Day Camp; Camp Adventure; Concert Fest; Manchester Day; Memorial Day; Luau at the Lake and Recreation Sports Programs
- **Fall:** Movies at the Lake; Veterans Day Ceremony; Trick or Trunk; Chili Cook-Off and Bonfire
- **Winter:** Tree Lighting and Home Decorating Contest

AND MUCH, MUCH MORE!

Go to [www.manchestertwp.com](http://www.manchestertwp.com) or visit Manchester Recreation on Facebook at ManchesterNJRecreation

## ANNUAL TREE LIGHTING

Ring in the holiday season by celebrating with us at our annual tree lighting ceremony!

Join us at the Court House Entrance  
At 7:00 p.m. on **Friday, December 9**

**Holiday Songs**

***Picture with Santa Claus and More...***

**All Are Welcome!**

Decorate your car, truck or van  
with holiday lights  
and join us for our parade of lights.

Please contact the Recreation  
Department to register at:  
732-657-8121 ext. 5101 or 5102



## HOLIDAY HOME DECORATING CONTEST

Manchester Township is alive with holiday spirit!

This year we will have 3 categories:  
(One winner in each category)

**“Spirit of the Holiday” • “Most Original”  
“Griswolds”**

**Two Ways To Enter!**

Name, address, phone number to:

1. Call: 732-657-8121 ext. 5102 or 5101

2. E-mail: [recreation@manchestertwp.com](mailto:recreation@manchestertwp.com)

*You must be registered by Friday, December 9.  
Judging will take place the week of December 12.*

*Please leave your lights on  
until 11pm the week of judging.*

WILLS

ESTATES

GUARDIANSHIPS

TRUSTS

## LAW OFFICES TAFF & DAVIES

ROBERT H. TAFF ~ JOEL A. DAVIES

MATTHEW K. KALWINSKY ~ CHRISTINA V. ACKER

*Serving our clients with dedication, competence and compassion.*

143 Route 70 ~ Toms River, NJ 08755 ~ 732-901-5797 ~ fax 732-901-5799

National Academy of Elder Law Attorneys ~ House Calls Upon Request

Whiting Office: 550 Route 530 ~ Whiting, NJ ~ 732-350-4600

[www.taffanddavies.com](http://www.taffanddavies.com)

Joel Davies has recently been appointed by Governor Christie to serve  
as a member of the “New Jersey Task Force on Abuse of Persons who are Elderly or Disabled”.

REAL ESTATE

MUNICIPAL COURT

TRAFFIC TICKETS

ESTATE LITIGATION

# DEPARTMENT OF PUBLIC WORKS

## MANCHESTER TOWNSHIP BULK AND LEAF/BRUSH INFORMATION 2017

**BULK PICK-UP:** LARGE ITEMS SUCH AS FURNITURE, DOORS, CABINETS, MATTRESSES and other LARGE NON-METAL ITEMS will be picked up on your scheduled date. WINDOWS, MIRRORS and other PANE GLASS must be TAPED before they are put out for pick-up, or they **will not** be picked up. Broken pane glass (not bottles) must be placed in a separate reusable, **not cardboard**, container marked "Broken Glass." Please stack computers, t.v.'s, stereos, dvd & video players, etc. (all electronics with cords) separately curbside. As of January 2011 these items are banned from the landfill and must be recycled. These items can also be brought to the Whiting Recycling Center.

**LEAF PICK-UP:** LEAVES & PINE NEEDLES must be raked to the curb in a single row, no earlier than 2 days prior to the scheduled pick up. Leaves will be vacuumed up utilizing large equipment and a clear path is required. All

vehicles should be parked away from leaf rows to expedite the process. Leaves mixed with any brush or debris **will not** be picked up. BRUSH & GARDEN WASTE, clippings and other vegetative waste must be placed in a separate container. BRANCHES must be tied into manageable bundles, less than 4-ft. long and under 50 lbs., with a max. branch diameter of 3 inches. Loose & unmanageable branches and waste **will not** be picked up.

**WHITE GOODS/APPLIANCES & METAL ITEMS:** Large household appliances such as WASHERS, DRYERS, REFRIGERATORS, STOVES & DISHWASHERS as well as LAWN-MOWERS, BICYCLES & other large METAL items, or items containing a significant amount of metal will be picked up on your Bulk Pick-Up dates. USEPA regulations require that FREON be removed from such appliances as REFRIGERATORS, AIR CONDITIONERS & FREEZERS before pick-up &

disposal. Residents must contact a Certified Contractor to remove the FREON from the appliance. **A Certificate of Freon Removal must be placed on the unit before it can be picked up.** **CONSTRUCTION - DEBRIS / BUILDING MATERIALS:** DRYWALL, SHINGLES, PLASTER, UNTREATED RAILROAD TIES, PLYWOOD, LUMBER, PANELING, INSULATION, SIDING & PORCELAIN FIXTURES **will not** be picked up at your home. It is requested that residents use a Private Container Service for home renovations. Small amounts of debris may be taken to the Whiting Recycling Center. DISPOSAL OF ANY DEBRIS GENERATED BY A BUILDING CONTRACTOR IS THE **SOLE RESPONSIBILITY** OF THE CONTRACTOR. Residents who are contractors **CANNOT** place their business waste & debris curbside during Bulk Pick-Up, nor can they bring it to the Whiting Recycling Center.

## 2017 MANCHESTER TOWNSHIP RECYCLING INFORMATION

**DATES IN BOLD AND UNDERLINED ARE SATURDAYS DUE TO HOLIDAY ON REGULAR DAY**

**REGARDLESS OF THE WEATHER CONDITIONS ALL RECYCLING MUST BE PLACED CURBSIDE THE NIGHT BEFORE YOUR PICKUP DATE.**

**SINGLE STREAM RECYCLING:** ALL RECYCLABLE MATERIALS ARE COMBINED IN A REUSABLE CONTAINER. DO NOT SORT. **DO NOT TIE OR BUNDLE CARDBOARD & NEWSPAPER. DO NOT USE PLASTIC BAGS.**

**ACCEPTABLE RECYCLABLE MATERIALS:** NEWSPAPER, MIXED PAPER & BROWN CORRUGATED CARDBOARD; JUNK MAIL, MAGAZINES, USED WRITING PAPER, WHITE ENVELOPES, COMPUTER PAPER & CATALOGS.

COMMINGLED BOTTLES, CANS & PLASTICS; PLASTIC BOTTLES, STEEL & ALUMINUM CANS, GLASS BOTTLES (EMPTY WITH CAPS OFF).

\*Note - **Only** recyclable plastic materials with the recycling 1 or 2 symbol on the bottom of container.

**NON-ACCEPTABLE RECYCLABLE MATERIALS:** PLASTIC BAGS (SHOPPING BAGS, FOOD STORAGE BAGS, ETC.), ALUMINUM FOIL, PLASTIC BOWLS, PLANT CONTAINERS, FOOD CONTAINERS, PACKAGING MATERIAL, MEDICAL WASTE, DISHES, GLASSES, HOUSEHOLD BATTERIES, POTS & PANS. TELEPHONE BOOKS WILL NOT BE PICKED UP WITH YOUR RECYCLING. YOU MAY DISPOSE OF THEM AT THE WHITING RECYCLING CENTER LOCATED OFF ROUTE 70 AT SAM PITTS ROAD. POLY-BOARD/GABLE TOP MILK & JUICE CARTONS, INCLUDING CHILDREN'S JUICE BOXES. **HOUSEHOLD BATTERIES ARE NO LONGER RECYCLABLE** - Tape the terminals of the batteries and dispose of in the regular trash.

### MANCHESTER RECYCLES - IT'S THE LAW!

**DO NOT DISPOSE OF SYRINGES & NEEDLES IN RECYCLING CONTAINERS OR IN RECYCLABLE BOTTLES & CANS**

CLOTHING DROP-BOXES ARE LOCATED AT THE WHITING RECYCLING CENTER

**TIRES, HAZARDOUS WASTE** (Anti-Freeze, Paint, Thinners, Solvents, Chemicals, Asbestos, Household Cleaners, etc.) **CONCRETE, TREE STUMPS, GRASS CLIPPINGS, ROCKS** and **LARGE BRANCHES will not BE PICKED UP** and are **NOT ACCEPTED** at the Whiting Recycling Center. For disposal of these items, contact the OCEAN COUNTY NORTHERN RECYCLING CENTER at 732-367-0802. Automobile **BATTERIES** may be taken to the Whiting Recycling Center.

**USED MOTOR OIL will not be picked up.** It should be taken to the Manchester Township Garage on Rte. 70 in Whiting in a clear plastic container with a tight lid.

**BRUSH & GARDEN WASTE** will be picked up on your scheduled **Leaf Pick-Up Dates**. No logs, stumps, grass clippings, bushes or trees with roots or debris from land clearing will be picked up.

**CARPETING** will be picked up provided it is cut up in 4-foot lengths, rolled and tied, and weighing not more than 50 pounds. Wet carpeting will not be picked up; it is the resident's responsibility to make sure that carpeting is not put out in the rain.

**MOTORIZED VEHICLES** such as dirt bikes, jet skis, scooters, boat motors & boats of any type **will not** be picked up and will not be accepted at the Whiting Recycling Center.

**PROPANE TANKS will not** be picked up and are not accepted at the Whiting Recycling Center.

Residents of Manchester Township are permitted to bring **HOUSEHOLD WASTE** to the Ocean County Landfill on Rte. 70. HOUSEHOLD WASTE, RECYCLABLES, & BULK can be brought to the Whiting Recycling Center, provided you have a Township issued STICKER on your vehicle. Stickers are issued **ONLY** to people who reside in the Township. Landfill permits are not issued to landlords or property owners who do not reside in Manchester Township. Landfill permits **will not** be issued for commercial vehicles. Upon entry of the recycling center in Whiting a valid Manchester driver's license must be presented to the booth attendant. **STICKERS** can be obtained at Town Hall, Room 103 or at the Public Works garage on Rte. 70 in Whiting, by providing **driver's license & vehicle registration showing a Manchester address. (New residents need to provide proof of residency such as phone, cable, electric or gas bills. We DO NOT accept water or tax bills).**

**Recycling Services Provided by  
CENTRAL JERSEY WASTE - 609-771-8005  
For more information contact the Department of Public Works at  
732-657-8121 x 3300.**



# DEPARTMENT OF PUBLIC WORKS

## 2017 MANCHESTER TOWNSHIP BULK & LEAF PICK-UP SCHEDULE

**NO MORE THAN 8 CUBIC YARDS OF BULK WASTE ITEMS WILL BE COLLECTED FROM ANY SINGLE RESIDENCE DURING ANY ONE SCHEDULED COLLECTION. APPROXIMATELY 5 FEET WIDE BY 4 FEET HIGH BY 10 FEET LONG.**

<b>ZONE 1 &amp; RESERVE</b> All of Whiting, beginning at the border of Lakehurst, West of Rte. 70, to include all of Beckerville, Roosevelt City, Fox Hollow, Timber Green, The Woods & the Pasadena area <b>BULK PICK-UP DATES</b> Feb 7 & Aug 22 <b>LEAF &amp; BRUSH PICK-UP DATES</b> Apr 27 & Nov 9	<b>ZONE 2A &amp; RIVER POINTE</b> Whitney, Richard & Clearstream Estates, Ridgeway Acres, Quarry Rd, Ridgeway Blvd, Single Family Homes- Ridgeway Area, Ridgeway Mobile Home Park, Rolling Meadows, Richmond & Washington Aves. Ridgeway West <b>BULK PICK-UP DATES</b> Feb 9 & Aug 24 <b>LEAF &amp; BRUSH PICK-UP DATES</b> May 2 & Nov 14		<b>ZONE 2B</b> Holly Oaks & Wilbur Ave. <b>BULK PICK-UP DATES</b> Feb 16 & Aug 31 <b>LEAF &amp; BRUSH PICK-UP DATES</b> May 11 & Dec 4 <b>Leisure Village West</b> <b>BULK PICK-UP DATES</b> Feb 28 & Sept 12	<b>ZONE 3A</b> All single family homes on or off Rte. 571 From Rte. 527 up to Maplewood & Fairfield St. Includes Alberta, Lockhardt, Seminole, Midway, Lake, Wellington Pl, Oak Knoll, Riverwood Ct. & Lawrence Pl. <b>BULK PICK-UP DATES</b> Feb 14 & Aug 29 <b>LEAF &amp; BRUSH PICK-UP DATES</b> May 4 & Nov 16	<b>ZONE 3B</b> All single family homes in Savannah Acres and Summit Park including all single family homes on Rte. 37, Briar Hill, Ridgeway & Pine Acres Manor, First, Second & Third Sts, Commonwealth Woods & Coventry Estates <b>BULK PICK-UP DATES</b> Feb 21 & Sep 5 <b>LEAF &amp; BRUSH PICK-UP DATES</b> May 16 & Dec 7	
<b>ZONE 4A</b> Pine Lake Park, 1st Ave. to the SOUTH side of Commonwealth, Gladstone thru Manchester St. including all dead end streets off Manchester St. <b>BULK PICK-UP DATES</b> Mar 9 & Sept 26 <b>LEAF &amp; BRUSH PICK-UP DATES</b> May 25 & Dec 18	<b>ZONE 4B</b> NORTH side of Commonwealth Blvd to Riverside & all dead end Sts. off Manchester St. <b>BULK PICK-UP DATES</b> Mar 14 & Sept 21 <b>LEAF &amp; BRUSH PICK-UP DATES</b> May 30 & Dec 14	<b>ONCE YOUR HOME HAS BEEN PASSED, THERE WILL BE NO RETURN FOR PICK-UPS.</b>  *The Township will provide a <b>SPECIAL PICK-UP OF BULK ITEMS</b> for the Death of a Homeowner (within 90 days), or if a resident is moving out of the Township. We do not provide a move "in" pickup service. <b>SPECIAL BULK PICK-UPS</b> must be requested <b>IN PERSON</b> by resident or family member <b>only</b> at the Public Works office in Town Hall. Families cannot be represented by a realtor. Proof of Residency <b>MUST</b> be provided along with Death Certificate, Contract of Sale or Lease Agreement as conditions require. Realtors, landlords and rubbish removal contractors <b>will not be</b> permitted to apply for special pick-ups.				
<b>CRESTWOOD VILLAGE 1</b> <b>BULK PICK-UP DATES</b> Jan 3 & July 18 <b>LEAF &amp; BRUSH PICK-UP DATES</b> Mar 21 & Oct 5	<b>CRESTWOOD VILLAGE 2</b> <b>BULK PICK-UP DATES</b> Jan 5 & July 20 <b>LEAF &amp; BRUSH PICK-UP DATES</b> Mar 23 & Oct 10	<b>CRESTWOOD VILLAGE 3</b> <b>BULK PICK-UP DATES</b> Jan 10 & July 25 <b>LEAF &amp; BRUSH PICK-UP DATES</b> Mar 28 & Oct 12	<b>CRESTWOOD VILLAGE 4</b> <b>BULK PICK-UP DATES</b> Jan 12 & July 27 <b>LEAF &amp; BRUSH PICK-UP DATES</b> Mar 30 & Oct 17	<b>CRESTWOOD VILLAGE 5</b> <b>BULK PICK-UP DATES</b> Jan 17 & Aug 1 <b>LEAF &amp; BRUSH PICK-UP DATES</b> Apr 6 & Oct 19	<b>CRESTWOOD VILLAGE 6</b> <b>BULK PICK-UP DATES</b> Jan 19 & Aug 3 <b>LEAF &amp; BRUSH PICK-UP DATES</b> Apr 11 & Oct 24	<b>CRESTWOOD VILLAGE 7</b> <b>BULK PICK-UP DATES</b> Jan 24 & Aug 8 <b>LEAF &amp; BRUSH PICK-UP DATES</b> Apr 13 & Oct 26
<b>CEDAR GLEN HOMES &amp; RENAISSANCE</b> <b>BULK PICK-UP DATES</b> Mar 2 & Sep 14 <b>LEAF &amp; BRUSH PICK-UP DATES</b> May 18 & Nov 28	<b>CEDAR GLEN WEST</b> <b>BULK PICK-UP DATES</b> Feb 23 & Sep 7  <b>LEAF &amp; BRUSH PICK-UP DATES</b> May 9 & Nov 21	<b>CEDAR GLEN LAKES</b> <b>BULK PICK-UP DATES</b> Jan 31 & Aug 15 <b>LEAF &amp; BRUSH PICK-UP DATES</b> Apr 20 & Nov 2	<b>PINE RIDGE &amp; PR SOUTH</b> <b>BULK PICK-UP DATES</b> Feb 2 & Aug 17 <b>LEAF &amp; BRUSH PICK-UP DATES</b> Apr 25 & Nov 7	<b>WHITING STATION, THE MEADOWS &amp; COUNTRY WALK</b> <b>BULK PICK-UP DATES</b> Jan 26 & Aug 10 <b>LEAF &amp; BRUSH PICK-UP DATES</b> Apr 18 & Oct 31	<b>LEISURE RIDGE</b> <b>BULK PICK-UP DATES</b> Feb 23 & Sep 7  <b>LEAF &amp; BRUSH PICK-UP DATES</b> May 9 & Nov 21	<b>LEISURE KNOLL</b> <b>BULK PICK-UP DATES</b> Mar 7 & Sep 19 <b>LEAF &amp; BRUSH PICK-UP DATES</b> May 23 & Dec 11

## Recycling Services Provided by CENTRAL JERSEY WASTE

### MONDAY:

Roosevelt City, Fox Hollow, Beckerville, Timber Green, Crestwood Village 6, Reserve

Jan 9-23; Feb 6-25; Mar 6-20; Apr 3-17, May 1-15; June 3-12-26; July 10-24; Aug 7-21; Sept 9-18; Oct 2-16-30; Nov 13-27; Dec 11-30.

Pine Lake Park-East, Southampton to Route 571, Leisure Knoll

Jan. 7-21-30, Feb. 13-27, Mar. 13-27, Apr. 10-24, May 8-22, June 5-19, July 3-17-31, Aug. 14-28, Sept. 11-25, Oct. 9-23 Nov. 6-20, Dec. 4-18.

### TUESDAY:

Pine Ridge & Pine Ridge South, Country Walk

Jan. 10-24, Feb. 7-21, Mar. 7-21, Apr. 4-18, May 2-16-30, June 13-27, July 11-25, Aug. 8-22, Sept. 5-19, Oct. 3-17-31, Nov. 14-28, Dec. 12-26.

Pine Lake Park - West of Southampton, Savannah Acres, Pine Acres Manor, Ridge Creek, Summit Park, Commonwealth Woods, Coventry Estates

Jan. 3-17-31, Feb. 14-28, Mar. 14-28, Apr. 11-25, May 9-23, June 6-20, July 8-18, Aug. 1-15-29, Sept. 12-26, Oct. 10-24, Nov. 7-21, Dec. 5-19.

### WEDNESDAY:

Homes on Rte 571 - North of Rte 70 to Jackson border - Rolling Meadows, Ridgeway Mobile Park, Shenandoah, Lakehurst Park, Renaissance & Ridgeway Acres, River Pointe, Cedar Glen West, Wilbur Ave. Holly Oaks, Clearstream Estates, Ridge Creek West

Jan. 11-25, Feb. 8-22, Mar. 8-22, Apr. 5-19, May 3-17-31 June 14-28, July 12-26, Aug. 9-23, Sept. 6-20, Oct. 4-18, Nov. 1-15-29, Dec. 13-27.

Leisure Village West, Homes on Rt. 571 - south of Rt. 70 to Toms River Border - Leisure Ridge, Oak Knoll, Cedar Glen Homes, Richard Estates

Jan. 4-18, Feb. 1-15, Mar. 1-15-29, Apr. 12-26, May 10-24, June 7-21, July 5-19, Aug. 2-16-30, Sept. 13-27, Oct. 11-25, Nov. 8-22, Dec. 6-20.

### THURSDAY:

Cedar Glen Lakes, Village Green, Old Whiting, Meadows, Pasadena, The Woods

Jan. 12-26, Feb. 9-23, Mar. 9-23, Apr. 6-20, May 4-18, June 1-15-29, July 13-27, Aug. 10-24, Sept. 7-21, Oct. 5-19 Nov. 2-16-30, Dec. 14-28.

Crestwood Villages 2 & 3

Jan. 5-19, Feb. 2-16, Mar. 2-16-30, Apr. 13-27, May 11-25, June 8-22, July 6-20, Aug. 3-17-31, Sept. 14-28, Oct. 12-26, Nov. 9-25, Dec. 7-21.

### FRIDAY:

Crestwood Villages 4 & 5, Schoolhouse Road

Jan. 13-27, Feb. 10-24, Mar. 10-24, Apr. 7-21, May 5-19, June 2-16-30, July 14-28, Aug. 11-25, Sept. 8-22, Oct. 6-20, Nov. 3-17, Dec. 1-15-29.

Crestwood Villages 1 & 7, Whiting Station

Jan. 6-20, Feb. 3-17, Mar. 3-17-31, Apr. 14-28, May 12-26, June 9-23, July 7-21, Aug. 4-18, Sept. 1-15-29, Oct. 13-27, Nov. 10-24, Dec. 8-22.



# HIGH-QUALITY HEALTHCARE

In a Retirement Community Setting

Here at Crestwood Manor we serve a variety of short- and long-term care needs including rehabilitation, respite care and skilled nursing.



**CRESTWOOD MANOR**

A SPRINGPOINT COMMUNITY

**ACCEPTING DIRECT ADMISSIONS**

Call today for more information: **732-849-2200**

*Affiliated with Springpoint Senior Living, New Jersey's leading provider of senior housing and care for 100 years.*



50 Lacey Road, Whiting, NJ 08759 • [crestwoodmanoronline.org](http://crestwoodmanoronline.org)  
A Senior Living Community



# OCEAN *Orthopedic* ASSOCIATES



Angie's list

\*TR Office

## Board Certified Orthopedic Surgeons

Offering services to Ocean, Monmouth and Middlesex counties to get you back into the game of life

### Our Team

Jess Alcid, MD  
Karl Blum, MD  
Robert Closkey, MD  
Sripad Dhawlikar, MD  
Mark Kasper, MD

Justin Kubeck, MD  
John Petrillo, MD  
Elmo Samuel, MD  
Christopher Passariello, MD  
Michael Pensak, MD

### Orthopedic Specialists

General Orthopedics  
Sports Medicine  
Joint Replacement  
Revisions  
Spine Surgery  
Hand and Upper Extremity Surgery

### Services

Pyramid MRI  
Digital X-Rays  
Pain Management  
Motor Vehicle Accidents  
Workers Comp  
Physical Therapy

530 Lakehurst Rd., Suite 101  
At the Pyramid Center  
Toms River, NJ 08755

2 Hospital Plaza, Suite 310  
Raritan Bay Medical Pavilion  
Old Bridge, NJ 08857

**732-349-8454**

**[www.oceanortho.com](http://www.oceanortho.com)**

Ocean Orthopedic Associates

# Welcomes Dr. Michael J. Pensak

## Orthopedic – Hand and Upper Extremity Specialist

Dr. Michael J. Pensak is a fellowship-trained hand and upper extremity surgeon and the newest physician to join Ocean Orthopedic Associates. He graduated cum laude from Cornell University and attended medical school at SUNY Downstate Medical Center. He completed his orthopedic residency training at University of Connecticut and a hand and upper extremity fellowship at the University of Colorado.

To schedule an appointment call **732-349-8454**.



118100



# UROLOGY GROUP OF CHOICE

Treating patients with compassion,  
dignity, mutual respect, and trust.



## SPECIALIZING IN:

- Adrenal Cancer
  - Benign Prostatic Hyperplasia (BPH; enlarged prostate)
  - Bladder Cancer
  - Bladder Control Problems
  - Erectile Dysfunction (impotence)
  - Female Sexual Dysfunction
  - Hematuria
  - Interstitial Cystitis
  - Kidney Cancer
  - Kidney Stones
  - Male Infertility
  - Pediatric Urology
  - Peyronie's Disease
  - Prostate Cancer
  - Prostatitis
  - Sexually Transmitted Diseases
  - Testicular Cancer
  - Testosterone Deficiency
  - Upper Tract Tumors
  - Urethral/Penile Cancer
  - Urinary Incontinence
  - Urinary Tract Infection
  - Varicocele
- Also performing:**
- Vasectomy
  - Robotic & Laparoscopic Surgery

For the fourth consecutive year, the doctors of University Urology Associates of New Jersey have been recognized by fellow medical practitioners to be among the best urologists in the Garden State.

University Urology Associates of New Jersey is proud to welcome Imani J. Rosario, MD to the group. Dr. Imani Rosario earned her medical degree from the Georgetown University School of Medicine and her post-graduate training in urology at Rutgers New Jersey Medical School. Prior to joining UUANJ, she was an Assistant Professor of Surgery in the Division of Urology at Rutgers NJ Medical School, where she was responsible for training and teaching medical students, general surgeons, and urologists in training.



**Hamilton**  
1374 WH Hamilton Sq. Rd.  
Hamilton, NJ 08690

**Howell**  
2364 Route 9 South  
Howell, NJ 07731

**Toms River:**  
20 Hospital Drive  
Toms River, NJ 08755



**UNIVERSITY**  
**UROLOGY ASSOCIATES**  
of New Jersey

**For Appointments:**  
**(609) 581-5900**  
**(732) 928-5300**  
**UUANJ.COM**



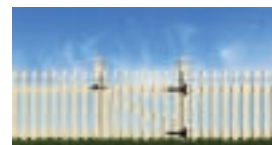
# TIPS EVERY HOMEOWNER SHOULD FOLLOW



✓ ALL HOMEOWNERS SHOULD CHECK WITH THE ZONING AND BUILDING DEPARTMENT BEFORE CONSTRUCTING ANYTHING ON YOUR PROPERTY.  
(i.e., fence, sheds, decks, roof overhangs, etc.)

✓ HOMEOWNERS SHOULD USE HOME IMPROVEMENT CONTRACTORS WHO ARE REGISTERED WITH THE STATE.

✓ A FENCE PERMIT IS ALWAYS REQUIRED, EVEN IF YOU ARE REPLACING AN EXISTING FENCE IN THE SAME LOCATION.



Know what's below.  
Call before you dig.

✓ ALWAYS CALL BEFORE YOU DIG; DIAL 811 or (800) 272-1000 FOR YOUR FREE UTILITY MARKOUT. IT'S THE LAW!

✓ LANDLORDS NEED TO REGISTER WITH THE TOWN EVERY YEAR IN JANUARY.

✓ A CERTIFICATE OF OCCUPANCY IS REQUIRED FOR EVERY RE-SALE AND/OR RENTAL PROPERTY.

✓ HOUSE NUMBERS SHALL BE PLACED ON EVERY HOME AT LEAST 4" TALL.

✓ BULK GARBAGE SHOULD NOT BE PLACED AT THE CURB UNTIL TWO (2) DAYS PRIOR TO BULK PICK-UP.

✓ EVERY PROPERTY OWNER IS RESPONSIBLE FOR THE UP-KEEP OF THEIR PROPERTY  
(i.e., Weed control, Accumulation of Rubbish, Un-registered Vehicles, etc.)



## WHAT IS ZONING?

The Zoning Office is your first stop within the municipality if you are interested in developing land, vacant or otherwise. The intent and purpose of zoning is to promote public health, safety, and general welfare through appropriate land use law.

The Township Zoning Code is administered and enforced by the Zoning Officer. The Zoning Officer reviews and approves applications for zoning permits. The Zoning Officer also investigates complaints of zoning violations and takes appropriate enforcement action. In order to prevent violations and assist in compliance, the Zoning Officer also meets with property owners, business owners and land use professionals to provide information.

Zoning permits are required for many projects including but not limited to:

• New home • Garage • Additions • Pools • Sheds • Fences • Decks • Change of Use in Commercial Building • Commercial Construction

NOTE: Always bring in a copy of your property survey when meeting with the Zoning Officer.

**Zoning Office hours are Monday through Friday, 8:30am-4pm. Nicole Ashkar, Zoning Officer 732-657-8121 ext. 3907**

### Assisted Living for the Memory Impaired.



- Private bedrooms
- Special diets available



- Professional nurses available 24 hours
- 3 meals daily, snacks & beverages
- Bathing, toileting, ambulating & dressing
- Housekeeping & laundry service
- Walking paths • Safe, secure grounds
- Stimulating activities • 24 hour supervision
- Daily respite, or long-term
- Alzheimer's specialists

Alzheimer's Support Group - 1st Saturday of each month at noon.  
Call for details.



732-290-CARE (2273)

[www.alcoeurgardens.com](http://www.alcoeurgardens.com)

**BRICK**

320 Herbertsville Road

**TOMS RIVER**

1126 Lakewood Road

**We specialize in evaluation, treatment, and support for memory loss.**

Call us today to schedule your free evaluation

Active studies include:

- Alzheimer's disease
- Migraines
- Agitation
- Depression
- Memory Loss/Confusion



**Memory & Aging Center**

OF NEW JERSEY

20 Hospital Dr, Suite 12

Toms River New Jersey

**732-244-2299**

[www.newjerseymemory.com](http://www.newjerseymemory.com)

## Thank You To Our Community Businesses

Manchester Township would like to thank the businesses that appear in this newsletter and to recognize them as supporters of our community for it is with their contributions that this newsletter has been produced at no charge to our residents. Manchester Township further requests that citizens patronize these businesses as they are saving each citizen tax dollars.

Action Plus Realty - Felicia Finn  
ADK Realty & Consulting Service

Alcoeur Gardens

Applebees c/o Doherty, Inc

Arthritis Institute - Dr. M.A. Abidi

Bella Salon & Spa

Carmona~Bolen Funeral Home

Carolina Select Furniture

Christ Lutheran Church

Crestwood Manor

Doug Steinke - Farmers Insurance

Joseph Maneri, D.M.D.

Law Offices of Taff & Davies

Martucci's Flashback Diner

Memory & Aging Center of NJ

New Tek Nails

Ocean Cardiovascular - Dr. Murat Karatepe

Ocean Orthopedic Associates

One Day Bath, Inc

Portuguese Grill

Sandy's Cozy Corner

Sil's Pierogi & More

The Pines at Whiting

University Urology Associates of NJ

Wendy's

Whiting Pharmacy

Whiting United Methodist Church

## UPDATE ANY ROOM FOR LESS THAN YOU CAN IMAGINE!



*Where High Point  
Meets the Jersey Shore!*

- Living Rooms • Bedrooms
- Dining Rooms • Mattresses
- Lamps & Accessories
- Rattan Furniture
- Same Day Delivery Available

**SINCE  
1988**

**CAROLINA SELECT FURNITURE**

609-698-8838 • 304 Route 9 • Waretown

[www.carolinaselectfurniture.com](http://www.carolinaselectfurniture.com)



Visit Our 6,000 Sq. Ft. Showroom!



**Military  
10% off  
Everyday**

**Breakfast  
All Day**

**Monday  
Milkshake  
Madness  
\$3 Shakes**

**Martucci's  
FLASHBACK**



**Bakery  
Section  
New York  
Breads**

**Delivery  
to  
Whiting**

**We  
Participate In  
The "Shop  
Manchester"  
Program**

**732-716-1122**

**400 Lacey Road  
(Stop & Shop Center)**

**On-line Ordering at [martuccisflashbackdiner.com](http://martuccisflashbackdiner.com)**

**We now have our delicious homemade soups  
and complete meals freezer and microwave ready.**

**Buy One Whole 16 inch Sub  
and Get One 50% off**



Cannot combine coupons. Limit one per visit.  
We reserve the right to change or substitute.  
Expires 3/1/17

**Check Us Out  
FREE COFFEE**  
**No purchase necessary**

Cannot combine coupons. Limit one per visit.  
We reserve the right to change or substitute.  
Expires 3/1/17



**Pork Roll, Egg & Cheese  
(with coffee or soda)**

**\$1<sup>99</sup> to go only**

Cannot combine coupons. Limit one per visit. We  
reserve the right to change or substitute.  
Expires 3/1/17



**Burger & Milkshake  
\$9<sup>99</sup>**

Cannot combine coupons. Limit one per visit.  
We reserve the right to change  
or substitute.  
Expires 3/1/17



**Party Special  
feeds 30-35 people  
\$150<sup>00</sup>**

2 pans penne vodka sauce • 2 pans  
sausage & peppers • 2 pans chicken  
parmigiana & toss salad  
Cannot combine coupons. Limit one per visit. We  
reserve the right to change or substitute.  
Expires 3/1/17

**Buy One Dinner  
Get One FREE**  
(equal or lesser value)

Cannot combine coupons. Limit one per visit. We  
reserve the right to change or substitute.  
Expires 3/1/17



**Buy Homemade Soup  
Get One FREE**  
eat in or take out (same size)

Cannot combine coupons. Limit one per visit. We  
reserve the right to change or substitute.  
Expires 3/1/17



**FREE Ice Cream Cone  
or Cup  
with Meal Purchase**

Cannot combine coupons.  
Limit one per visit. We reserve the  
right to change or substitute.  
Expires 3/1/17



# Affordable Tub to Showers Options to Meet Everyone's Budget

Bathroom makeovers can now be done for any budget and in just one day according to Paul Echavarria, owner of One Day Bath.



One Day Bath, founded in 1998, “was started to fill an economic need,” said Echavarria. “We needed to find a way that someone with any size budget could make their bathroom safe and beautiful again in just one day.”

They offer tub cuts, tub to shower conversions and Tub & Wall Liners as well as Tub & Tile reglazing of the existing tub & tile. “We give alternatives to demolition that are fast and easy and that look good,” he said. “We have a solution for almost for almost any size budget or situation.” This is especially true for the older demographic who may need the benefits of a walk-in shower but not want to spend an excessive amount of money. “They need access to the tub, so the Tub Cut is the perfect solution for them,” Echavarria said. “It’s done in just a half a day and converts your existing tub to a shower. It gives people their lives back.”

Of course they will do a traditional rip-out, tub to shower conversion if the customer wants. “The tub gets removed and a new shower pan is installed,” he said. New acrylic walls then finish off the look giving the customer his dream bathroom,” Echavarria said.

“The acrylic walls come in so many different designs, that it is hard to choose. From slates, travertines, stone looks, tiles,

granites and marbles, there’s a lot of choices,” he said.

“Of course rip out usually take up to two days,” he said. “That’s when the

customer usually jokes calling us Two-Day Bath.”

Tub and tile reglazing offers an alternative to the cost and inconvenience of demolition. The cost of a full bathroom resurfacing is between \$900 and \$1,500. They repair all the chips, scratches and cracks and will change the color of the existing tile too, according to Echavarria.



“We can pretty much make your tub and tiles any color under the sun. Also the product used in the tub and tile resurfacing is mildew resistant,” he said.

“We’re very proud of the work we do here,” he said.

“We try hard everyday to live up to expectations.”

One Day Bath offers a lifetime guarantee on its Tub Cut and Liner services and 3 year guarantee on its reglazing service. It’s handicap-accessible tub modifications meet ADA standards and they service New Jersey and Pennsylvania.



866-972-0183 • [www.ODBPRO.com](http://www.ODBPRO.com)



# RECOVERING FROM SURGERY OR A HOSPITAL STAY?

## Consider Hamilton Place at The Pines.

*It's in your neighborhood!*



You don't have to be a resident of The Pines to benefit from the Hamilton Place Transitions program.

Experience "Gentle Touch" care for a faster recovery from surgery, hip or knee replacement, injury or illness.

At Hamilton Place, residents are treated like family and our service – especially the food – is rated exceptional.

Feel the difference of a smaller size where even the Administrator and Director of Nursing know each resident.

Plus, The Pines offers a full continuum of care including: **independent living, assisted living, respite care, memory care and long-term care** should you need additional help.

### ***Hamilton Place rehabilitation includes:***

- Beautiful private rooms with private baths
- In-room televisions and electric beds
- Appetizing meals with a variety of choice
- Therapy gym for physical, speech and occupational therapies
- Full recreational activity program

*Consistently stellar marks in  
resident and family satisfaction.*

***To schedule a tour or arrange rehabilitation  
or skilled nursing, call us today***

**732-849-0400**



509 Route 530  
Whiting, NJ 08759

[www.thepinesatwhiting.org](http://www.thepinesatwhiting.org)



CODE



## Adult Community Sales Our Specialty

At ADK we understand your needs  
& will meet your Expectations!

Get The Attention You Deserve &  
The Results You Want...

Don't Delay Call ADK!

CALL FOR A FREE MARKET ANALYSIS AND HOME STAGING CONSULTATION



JoAnn Petrizzo  
Owner/Broker



**732-255-4433**

1071 Rt 37 West & Bananier

Next to the News Hut in the Favorites OTB Shopping Center

[www.adkrealtynj.com](http://www.adkrealtynj.com)



2009-2015



**New Tek Nails** ANC

**(732)642-5687**

No UV/LED Lamp, No Odor, No Damaged Nail Bed  
Flexible, Glossy Finish, Healthy For Your  
natural nails by adding Calcium and Vitamin E  
Over 170 Colors in ANC To choose from...

Pink And White <del>\$50</del> <b>\$35</b> ANC	ANC Nails set <b>\$30</b>	<b>\$5 off</b> for reg pedicure
--	------------------------------	------------------------------------

**New Tek Nails**  
Professional Nail Care for Ladies & Gentlemen  
(732)642-5687 1900 RTE 70 Store 3 Manchester NJ 08759

**Sil's PIEROGI & more**

Homemade Comfort Food Made Fresh Daily!

Gourmet Pierogi • Kielbasa • Haluski  
Fresh Salads • Cheese Blintzes  
GRAB & GO DINNERS  
Potato Pancakes • Stuffed Cabbage

Eat-In/Take-Out  
Monday-Saturday 11am-7pm  
(Closed Sunday)

1071 Route 37 West  
Toms River, NJ  
**732-575-7218**



## Annual Easter Egg Hunt

Children will have loads of fun as they hunt for prize filled eggs and visit with the Easter Bunny.

Sunday, April 9 at 10:00am at Pine Lake Park (rain or shine)

Ages 2-10 ~ Pre-registration is required

Call the Department of Recreation at 732-657-8121 ext 5101 or 5102.

You **MUST** be registered by Monday, April 3rd (250 children max).

Manchester Recreation - Like us on Facebook



## Bella Salon & Spa

*Come as You Are, Leave as You Want.*

### Full Service Salon Featuring:

Highlights, Waxing, Manicures,  
Pedicures, Facials, Eyelashes,  
Organic Hair Care Line,  
Certified Colorists, Inlay,  
(extensions specializing in thin hair)

Education is a large part of this salon, not only  
for the staff, but more importantly for you.

We Not Only Take Care of Your Hair,  
We Take Care of the Whole You!

1051 Route 70  
Manchester, NJ 08759

**732.323.8999**



## Carmona ~ Bolen

Home for Funerals, LLC



*"Let Our Home Be Your Home"*

Family Owned & Operated  
Lawrence G. Bolen, Founder 1980  
Joyce L. Bolen, Owner

Two Convenient Locations To Serve You

Toms River



412 Main Street  
Toms River, NJ 08753  
(732) 349-1922

Michael J. Defonzo Jr.,  
Manager  
N.J. Lic 04075

Whiting



66 Lacey Road  
Whiting, NJ 08759  
(732) 350-0003

[www.carmonabolenfh.com](http://www.carmonabolenfh.com)

\*Unlicensed and not qualified to make funeral arrangements, obituary or conduct funerals

## OCEAN CARDIOVASCULAR

Invasive and Noninvasive Cardiology

**732.505.9005 • fax 732.505.9919**

### MURAT KARATEPE, M.D., FACC

Board Certified in  
Cardiology & Nuclear Cardiology  
Echocardiography

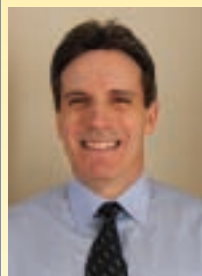
### ASU RUSTEMLI, M.D., FACC

Board Certified in  
Cardiology & Nuclear Cardiology,  
Echocardiography, Cardiovascular CT,  
Vascular Medicine and Vascular Interpretation (RPVI)

- Echocardiography
- Carotid Ultrasound
- Holter Monitoring
- Stress Testing

25 Mule Rd., Suite B2  
Toms River, NJ 08755

2101 Lake Rd.  
Whiting, NJ 08759



## Joseph M. Maneri, DMD

Quality family dentistry by a warm, caring,  
professional staff. If you have any questions  
or concerns about your dental needs,  
please call for an appointment.

**NEW PATIENT SPECIAL**  
**Initial Cleaning, Exam &**  
**2 BW X-Rays ..... \$90**

Experienced In All Phases Of Dentistry  
Serving the Community for over 28 years.

We participate in the Delta Dental Plan of NJ, Aetna, Cigna,  
Humana, and work with many other insurance companies.

**INTEREST FREE FINANCING AVAILABLE**  
DENTURES, CROWNS, BRIDGES, PARTIALS, IMPLANT  
RESTORATION, ROOT CANAL, BONDINGS & WHITE FILLINGS

**SAME DAY DENTURE REPAIRS**

67 Lacey Rd • Suite 1 • Whiting NJ

DELTA DENTAL

P.A.A.D. Courtesy

**732-350-2100**

**MANCHESTER TOWNSHIP**  
**1 COLONIAL DRIVE**  
**MANCHESTER, NJ 08759**  
**732-657-8121**

Presorted Standard  
U.S. Postage  
**PAID**  
Bellmawr, NJ 080  
Permit #7



This Community Newsletter is produced for  
Manchester Township by **Hometown Press**  
215.257.1500 • All rights reserved®

*To Place An Ad Call Elizabeth Konopacki at 609-209-2277*



**Nick Patel**  
Doctor of Pharmacy  
Pharmacist in Charge / Owner

## **WHITING PHARMACY**

**Guaranteed LOWEST PRICES**

**Come in and see your neighborhood pharmacist**

**Free Pick Up & Delivery – Everyday!**

**732-849-3141**  
**200 Lacy Rd. • Whiting**

## **ARTHRITIS INSTITUTE** **732-840-8402**

**M.A. Abidi, M.D., F.A.C.R.**

**Board Certified Rheumatologist in Whiting**

*Appointments Available for the Treatment of:*

- Osteoarthritis
- Rheumatoid Arthritis
- Osteoporosis
- Lupus
- Lyme Disease
- Bursitis/Tendonitis
- Carpal Tunnel Syndrome
- Other Rheumatological and Connective Tissue Diseases

*\* Procedures done under ultrasound guidance*



**STATE OF THE ART:**  
*Remicade, Orencia, Rituxan Infusions  
for Rheumatoid Arthritis and Other  
Inflammatory Arthritis Conditions*

### **3 CONVENIENT LOCATIONS**

**WHITING**  
**70 Lacy Rd.**

**BRICK**  
**206 Jack Martin Boulevard**

**LONG BRANCH**  
**279 3rd Ave.**

*The information contained in the “Manchester Citizen” newsletter  
can also be accessed on our website at [www.manchestertwp.com](http://www.manchestertwp.com)*